



## World SME Expo

December 2 – 4, 2010

Hong Kong Convention and Exhibition Centre

- An international marketplace connecting small and medium enterprises (SMEs) around the world



## Two Major Zones

### Solutions Hall

- Financial Services
- IT & E-Business
- Business Support Services
- China Trade Strategies
- Business Intelligence
- Start-a-Business
- Government and Institutions

### Opportunities Hall

- China Opportunities
- Overseas Opportunities
- HKTD C SME Station



## Exhibitors

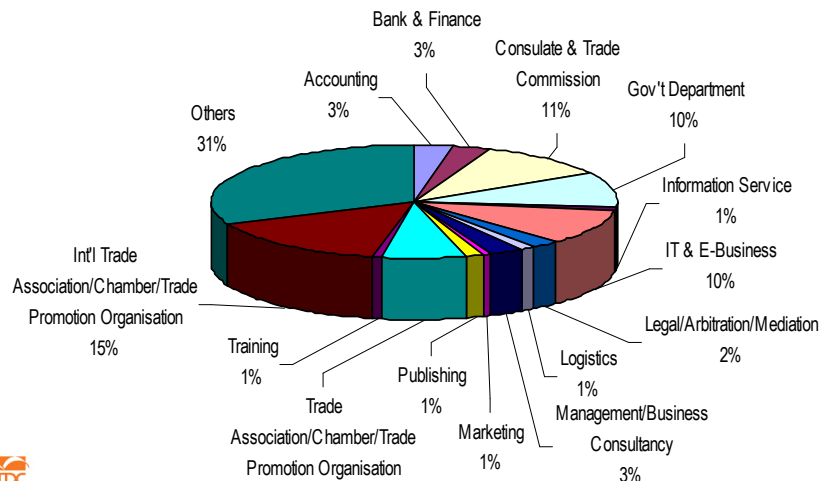
### 2009

- **323 exhibitors**
  - 37% from Hong Kong**
  - 31% from Chinese Mainland**
  - 32% from 41 other countries and regions**



## Exhibitors

### Exhibitors by Sector



## Trade Visitors

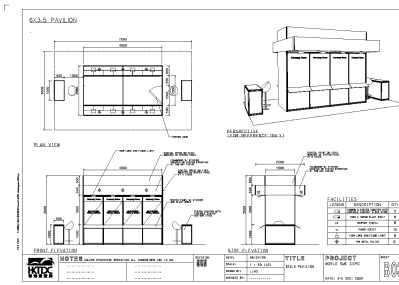
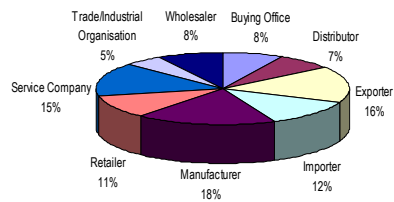
### 2009

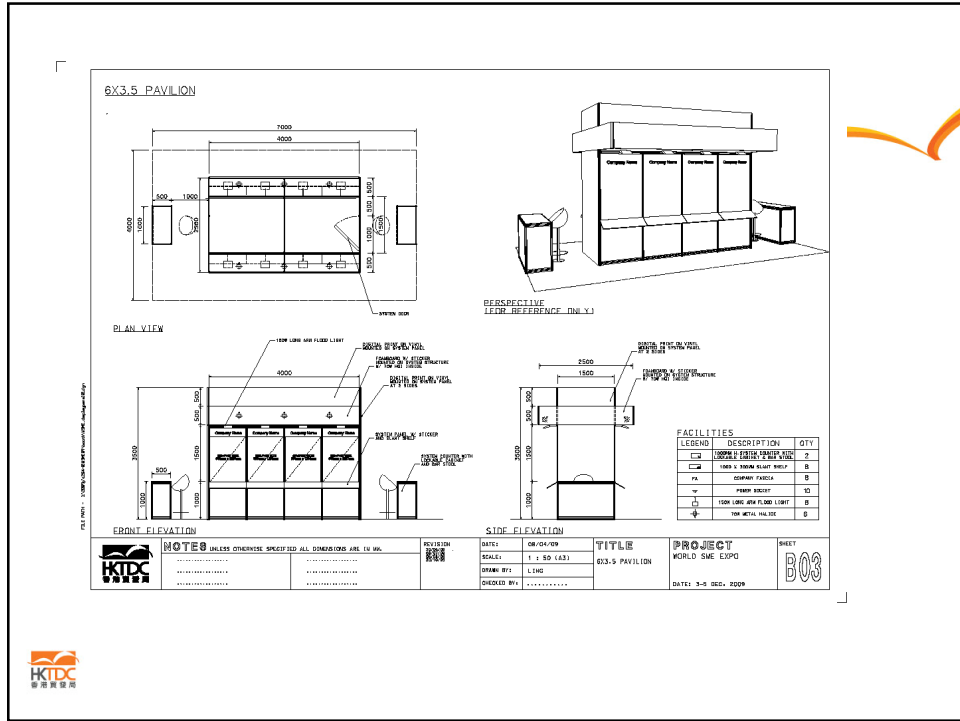
- Over 13,600 trade visitors
  - 76% from Hong Kong
  - 16% from Chinese Mainland
  - 8% from 52 other countries and regions



## Trade Visitors

Visitors by Nature of Business





## Concurrent Event



### Inno Design Tech Expo

- 2-4 December 2010
- A world-class exposition of innovations, technologies and design solutions

**Organiser:**



**Co-organisers:**



**Thank You**

